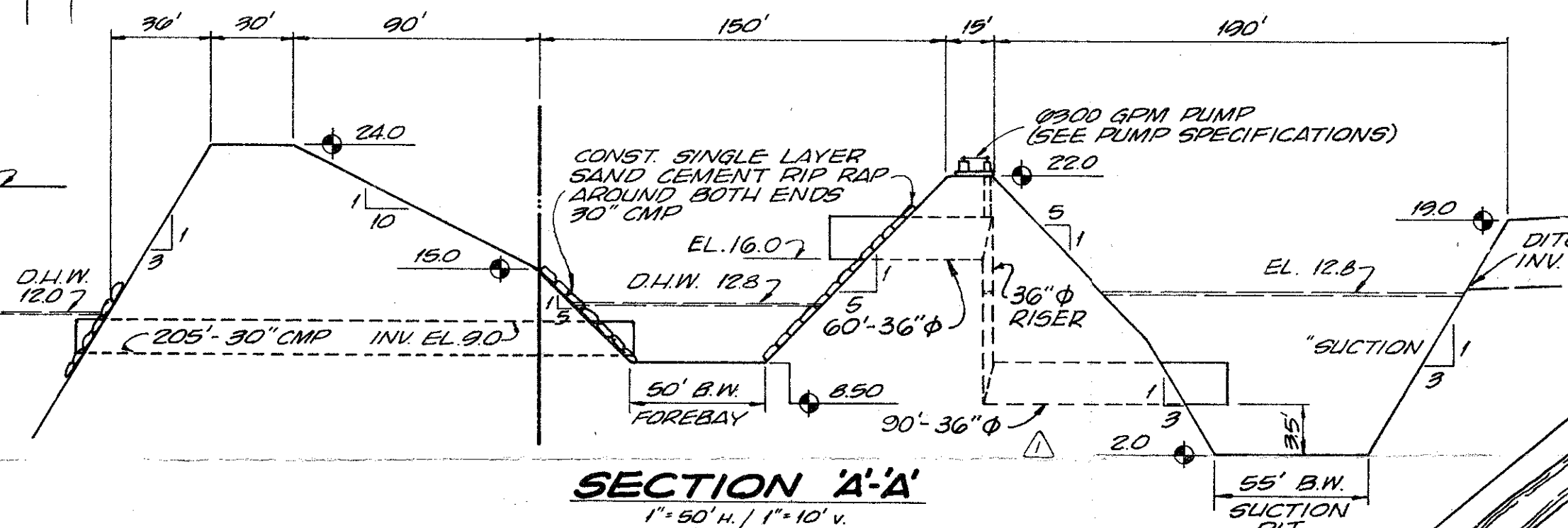
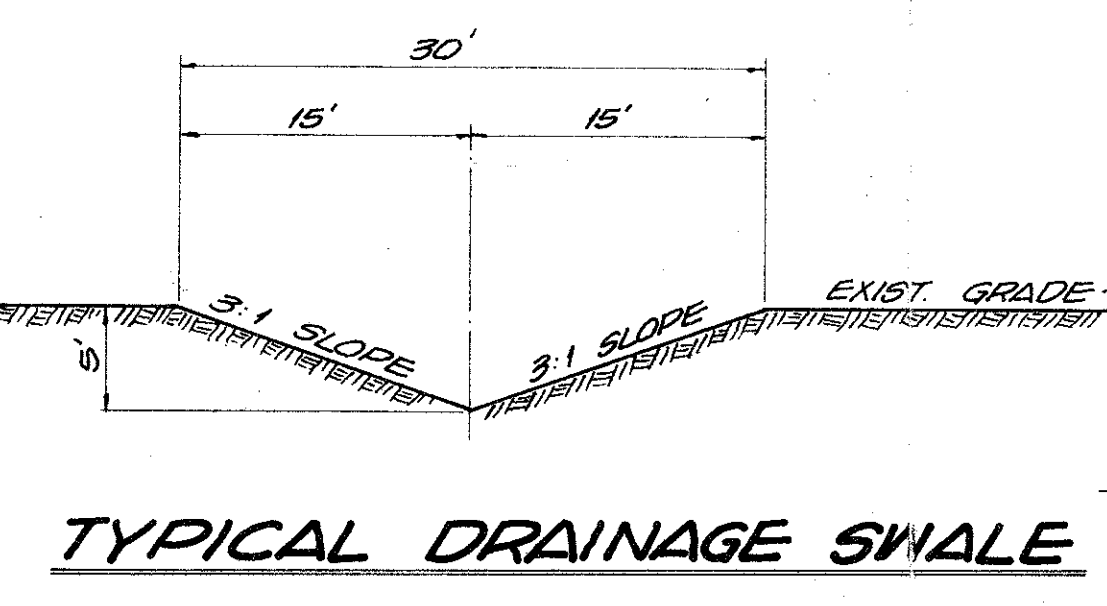
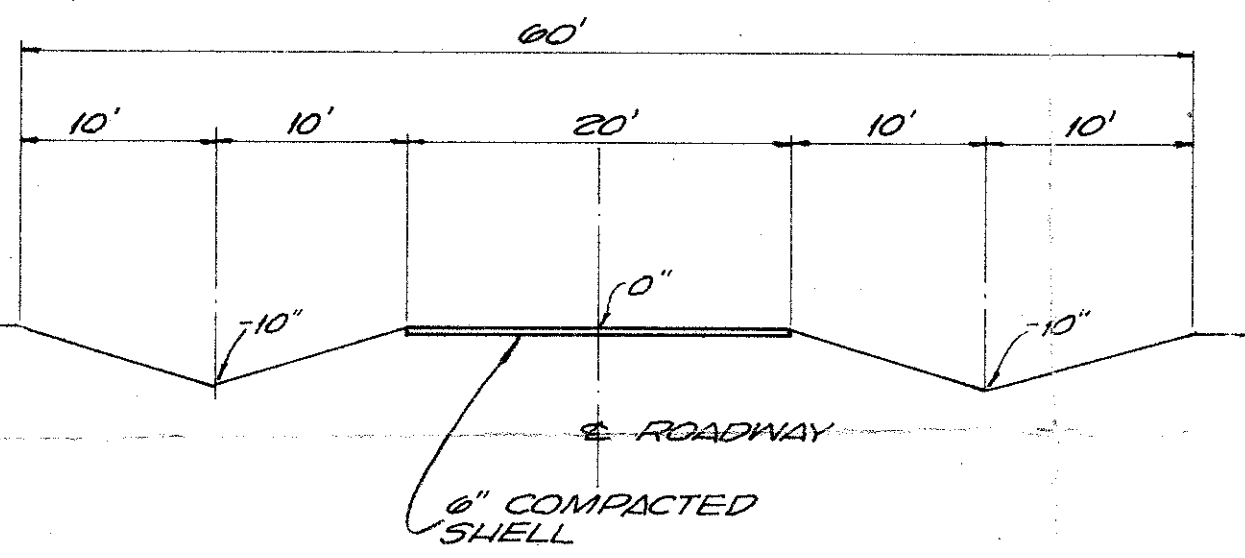


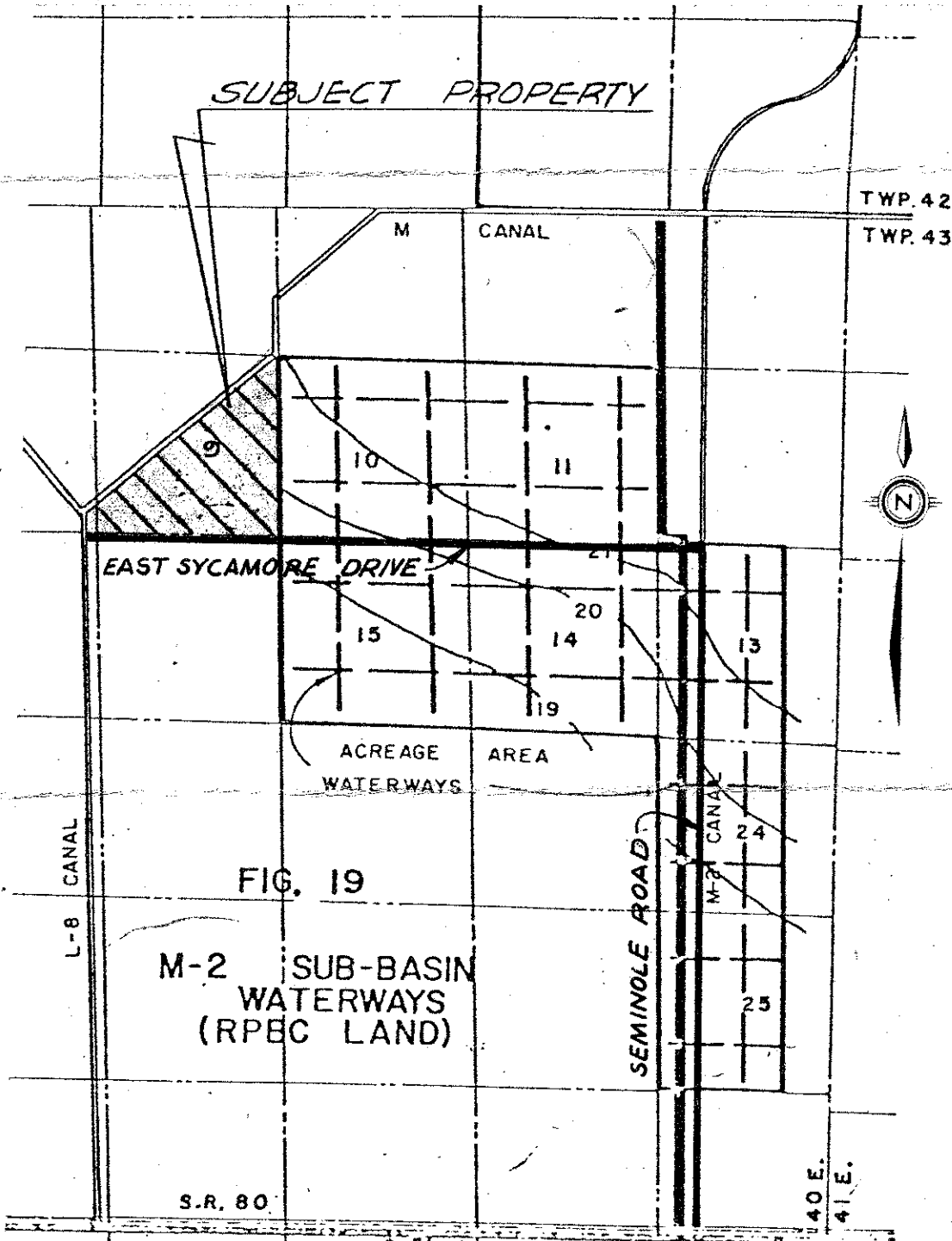
PUMP SPECIFICATIONS:
 PUMP TO BE 1/2 HP HYDRAFLUO 1/2 AC OR EQUAL WITH A CAPACITY OF 2000 GPM. IT SHALL BE LOCATED AS SHOWN ON THE PLAN AND MOUNTED ON AN 8'x5' CONCRETE SLAB, 6" THICK, WITH 4 BARS @ 6" O.C.E.W. THE DISCHARGE LINE SHALL BE 30" IN DIAMETER WITH A 36" DIAMETER SUCTION INTAKE & A 36" DIAMETER RISER. A 60 HP STANDBY DIESEL SHALL BE PROVIDED AS WELL AS FLOAT LEVEL CONTROLS, SET TO MAINTAIN A WATER ELEVATION OF 128 MSL. AT THE SUCTION INTAKE. A 1/2" RETURN LINE AND 1 1/2" PRESSURE LINE SHALL BE PROVIDED FOR PUMP OPERATION. PUMP ON ELEVATION = 128 PUMP OFF ELEVATION = 128



SECTION A-A'
 1" = 50' H. / 1" = 10' V.
CONNECTION TO L-8 CANAL



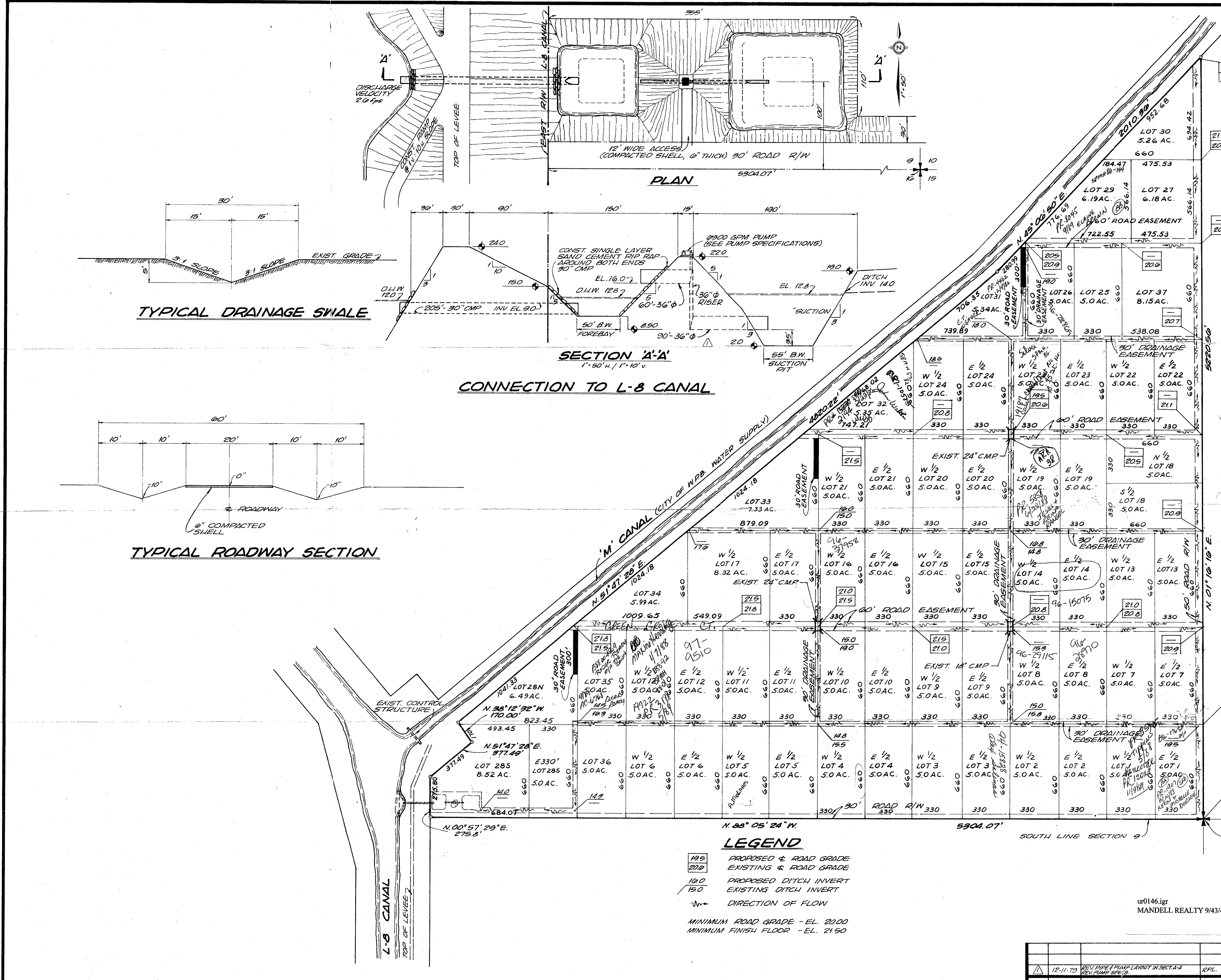
TYPICAL ROADWAY SECTION



LOCATION MAP
 SCALE: 1" = 1 mi.

NOTE: LOT DEMINIONS & AC HAVE NOT BEEN CALCULATED AT THIS TIME BY WANTMAN & ASSOC.

RECEIVED
 MAR 19 1980
 LAND DEVELOPMENT
 PALM BEACH COUNTY



LEGEND

- 125 PROPOSED & ROAD GRADE
- 220 EXISTING & ROAD GRADE
- 12.0 PROPOSED DITCH INVERT
- 15.0 EXISTING DITCH INVERT
- DIRECTION OF FLOW

MINIMUM ROAD GRADE - EL. 22.00
 MINIMUM FINISH FLOOR - EL. 21.90

SECTION 9 PARCEL FOR MANDELL REALTY
WANTMAN & ASSOCIATES, INC.
 CONSULTING ENGINEERS
 WEST PALM BEACH FLORIDA

REVISIONS				
NO	DATE	DISCUSSION	BY	REVISIONS
1	12-11-79	REV. PUMP & PUMP LAYOUT IN SECT. A-A	RPL.	
2				
3				

DRAWN	FIELD BOOK NO.	DATE	JOB NO.	SHEET
R. HASKO	PG.	JAN. 1979	78-042	1 OF 1
DESIGNED	CHECKED	SCALE	DRAWING NO.	
R. HASKO	J. WANTMAN	1" = 300'	3-78-042	